

---

# CITY OF NISSWA COMPREHENSIVE PLAN UPDATE

STEERING COMMITTEE MEETING #3 – MARCH 21<sup>ST</sup> – 6:00 – 8:00PM





Introductions  
Housekeeping items  
Why we are here





# AGENDA

Review Schedule  
TOC  
Goals – 6 topics  
Next Steps

# FUTURE MEETING DATES AND LOCATIONS

- **Steering Committee Meetings (6):**

- Meeting #1: December 6<sup>th</sup>
- Meeting #2: First week in Jan
- Meeting #3a: Early March
- Meeting #3b: Mid-March
- **Meeting #4: April 4<sup>th</sup> 5:30 – 7:30**
- Meeting #5: Early May
- Meeting #6: Mid June

- **Open Houses (2):**

- January 10<sup>th</sup> @ the Community Center from 7:00 – 8:30 pm
- **Visioning Session #2, April 18<sup>th</sup> at Grand View Lodge from 5:00 – 8:00 pm**
- Third – if determined necessary

- **Walking tour (weather permitting)**

- **Focus Groups**

- Sustainability
- Land Use and Development
- Local Businesses and Economic Development

# S.M.A.R.T GOALS

- **Specific:** When setting a goal, be precise about what you want to accomplish
- **Measurable:** What metrics are you going to use to determine if you meet the goal?
- **Agreed-upon:** Do these goals reflect what the community would like to see?
- **Realistic:** Are these goals achievable?
- **Time-based:** Provide a target date for deliverables



# GOAL OVERVIEW AND HOW-TO

## GOAL:

- Each plan element within the comprehensive plan will include a series of goals and policies to formulate measurable steps in achieving the community's overall vision.
- Goals establish long-range efforts for the city and are intended to serve as guidelines for the comprehensive plan.
- **They represent general statements that identify community aspiration or desired conditions.**

**Housing Goal example: “Achieve a diverse and balanced supply of market rate and affordable life cycle housing.”**

**Transportation Goal example: “Foster a healthy, equitable, and economically vibrant community where all residents have greater mobility choices.”**

# POLICY OVERVIEW AND HOW-TO

## POLICY:

- Each goal is then accompanied by several policy statements.
- Policies describe actions aimed at achieving each of the goals located in the plan element.
- **Policies will be developed following the review and refinement of plan element goals.**

Housing Goal example: “Achieve a diverse and balanced supply of market rate and affordable life cycle housing.”

**Policy: “Encourage the development of a variety of housing types, densities, and styles at price ranges for all income levels and ages to meet current and future community needs.”**

Transportation Goal example: “Foster a healthy, equitable, and economically vibrant community where all residents have greater mobility choices.”

**Policy: “Develop a network of enhanced local connections to the Paul Bunyan Trail.”**



**NISSWA CHARACTER/COMMUNITY VISION**

**LAND USE**

**TRANSPORTATION AND INFRASTRUCTURE**

**ECONOMIC DEVELOPMENT**

**SUSTAINABILITY**

**TOURISM**



# NISSWA CHARACTER/COMMUNITY VISION

- **Goal 1:** Ensure that people can live, work, and play in the City of Niswaa
- **Goal 2:** Protect and enhance the sense of place and character of Niswaa
- **Goal 3:** Support and enhance the health and integrity of the natural environment that sustains the spirit of the community
- **Goal 4:** The stock of trust, relationships and networks that support community collaboration improve annually by at least 1% over the next ten (10) years.

# LAND USE

- **Goal 1:** Provide for orderly development by establishing proper relationships among natural resources, commercial, residential, and other land uses.
- **Goal 2:** Maintain and adopt a Land Use Plan that designates land use areas and guides development to appropriate areas; ensuring desirable land use patterns and minimizing conflicts.
- **Goal 3:** Enhance Nisswa's image as a community of vibrant, thriving, and desirable neighborhoods; a regional hub for commerce, recreation, arts, and tourism.
- **Goal 4:** Enhance the diversity and livability of residential areas.

# LAND USE

- **Goal 5:** Support development that enhances community character; preserving the small town character and protecting natural resources and environmentally sensitive areas.
- **Goal 6:** Encourage mixed-use development that is focused on the integration of land uses.
- **Goal 7:** Provide physical accessibility throughout Nisswa.

## Downtown

- **Goal 1:** Support the social and economic viability of Nisswa's downtown.

# TRANSPORTATION AND INFRASTRUCTURE

## Transportation |

- **Goal 1:** Trail systems are interconnected throughout the Niswaga community and to regional systems by 2035.
- **Goal 2:** Improve connectivity throughout the community.
- **Goal 3:** Plan and develop a safe, accessible multimodal transportation system.

# TRANSPORTATION AND INFRASTRUCTURE

## Infrastructure |

- **Goal 1:** Provide cost effective and quality city services.
- **Goal 2:** Plan for the expansion of public utilities to facilitate healthy and sustainable community growth.
- **Goal 3:** Prioritize infill development on vacant lands and redevelopment of blighted, neglected properties.
- **Goal 4:** Avoid environmentally sensitive areas when extending and constructing utilities.
- **Goal 5:** Coordinate infrastructure improvements to maximize the economic benefits of street reconstructions that include sewer, water, power, and streetscaping.

# ECONOMIC DEVELOPMENT

- **Goal 1:** Promote Nisswa as a great place for business and commerce.
- **Goal 2:** Develop a housing stock that meets the diverse needs of residents.
- **Goal 3:** Create cohesive residential neighborhoods that support the image of Nisswa as an interconnected community.
- **Goal 4:** Support the development of tourist-related commercial enterprises that strengthens Nisswa's position as a tourist destination.
- **Goal 5:** Increase number of small and medium enterprises (SME) 5% by 2022.

# TOURISM

- **Goal 1:** Increase visitor spending in Nisswa by 5% by 2025.
- **Goal 2:** To have a sustainable, year-round economy through partnerships with local businesses, resort operators, and other agencies that creates opportunities for all.

# SUSTAINABILITY

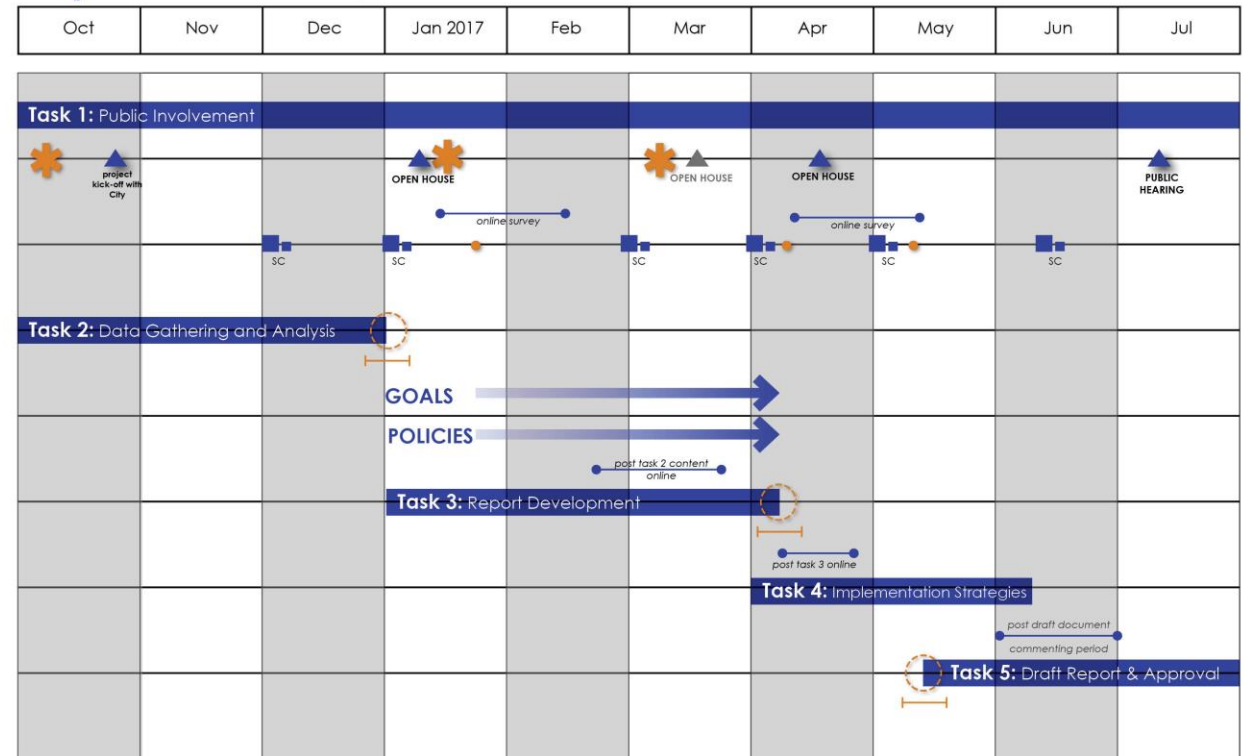
- **Goal 1:** Ensure that elements of the built environment provide sustainable, green places for residents.
- **Goal 2:** Maintaining natural resources and sensitive environmental areas are a priority.
- **Goal 3:** Ensure that public health needs are recognized and addressed through various provisions.



# NEXT STEPS

- Make changes/additions/omissions to goals
- Create policies at SC Meeting #4, April 4, 5:30 – 7:30 pm
- Visioning Session #2 – April 18<sup>th</sup> 5:00 – 8:00pm @ Grand View Lodge
- Draft chapters to be sent in April

## City of Nisswa Comprehensive Plan Schedule



### Legend

- RS/NUPA team meeting
- public involvement meeting
- Steering Committee (SC) meeting
- team milestone
- time period for online content postings
- RS/NUPA progress check-in
- focus group meetings

**Task 1:** Draft public participation plan, and develop a schedule and strategy for the entire community involvement component. Meetings with steering committee will be necessary to define approach

**Task 2:** Research, analyze, graph, chart, and map information. Present to SC, online survey, and summarize data.

**Task 3:** Work with CPSC, use public comment, and develop visions, objectives, and goals.

**Task 4:** Work with CPSC, use public comment, and identify implementation strategies.

**Task 5:** Draft report and prepare for open house and work towards completed draft.

**DRAFT**  
for discussion  
purposes only

# CONTACT INFORMATION

## Questions?

**Ashley Kaisershot, ASLA**

Ashley.Kaisershot@njpacoop.org

**Dawn Espe**

despe@regionfive.org

**Brent Jones**

bjones@ci.nisswa.mn.us